



Towcester Church of England Primary School

We will send the children out, as Noah did the dove (Genesis 8:8-12), having nurtured and prepared them for life. Knowing that they are valued, they can fly and take the values of the school out into the world.

'If we live by the spirit, let us also walk in the spirit.' (Galatians 5:25)

Welcome to Academic Year 2023 – 24!

Dear Parents and Carers,

Welcome back to our new school year!

It has been wonderful to welcome all of our children and families back to school today. We hope that you have all had a good summer break and enjoyed time with family and friends.

Our staff team have been working really hard to get the school ready for the children's return, whilst contractors have been undertaking a number of projects across the school site to improve our facilities. I'm sure that you join me in extending a huge thank you to everyone involved. The school looks fantastic!

Over the summer we have recruited some new team members, Ms Shanice Bodily joins us as teaching assistant in our Early Years classes; Ms Madison Roofayel joins us as teaching assistant in Year 5. Please join me in making them feel very welcome.

This newsletter contains important information about routines, dates and events in the coming term. As always, this is a busy term with lots of events taking place, please do join us in celebrating our wonderful children and their achievements throughout the coming months, we look forward to seeing you!

Kind regards,

*Sally Beaton
Headteacher.*

Welcome to our new EYFS intake!

We look forward to (officially!) welcoming the children and their families to our school this week. Starting school is a huge step in a child's life, our Reception class team have been working hard over the summer to prepare their environment to give them the very best start to their learning journey. Please join me in welcoming the children and their families into our school family.

Meet the teacher sessions

Once again this year, we invite parents to attend our Class Information sessions in which you will be able to meet your child's class teacher and support staff and find out about your child's curriculum, timetable, routines and expectations for the coming year.

The sessions are scheduled as follows:

EYFS: Thursday 21st September, 3 – 3.30pm in your child's classroom.

KS1 (Years 1 and 2): Thursday 21st September, 3 – 3.30pm in your child's classroom.

Lower KS2 (Years 3 and 4): Wednesday 20th September, 3 – 3.30pm in your child's classroom.

Upper KS2 (Years 5 and 6): Monday 18th September, 3 – 3.30pm in your child's classroom.

Please do come and join us!

If you are unable to attend, the information from the sessions will be shared on Class Dojo.

School Uniform

Please remember, we want our children to wear their school badge with pride and for people to look at our pupils and their first impression be - WOW—these children really represent Towcester Primary School well!

School uniform expectations are as follows:

- ✓ black or grey trousers or skirt,
- ✓ a plain white polo-shirt or shirt, with school logo where possible
- ✓ a blue school jumper or cardigan with the school logo
- ✓ black or grey socks or tights
- ✓ smart, closed-toe black leather shoes. No trainers or astros please.

During warmer months:

- ✓ blue and white summer dresses.
- ✓ smart black or grey shorts

Hair:

- ✓ We ask that long hair is kept neatly tied back during school time.
- ✓ Simple headbands may be worn in the school colours.
- ✓ Please do not send your child into school wearing large bows, clips, scrunchies or headbands.
- ✓ Please save adding hair colours, dyes and shaved-in shapes for the summer holidays

PE Kit:

- ✓ Blue or white Towcester badged T shirt
- ✓ Black shorts, leggings or jogging bottoms
- ✓ Trainers/Plimsolls depending on the weather
- ✓ In cold weather children may wear a plain, dark coloured sweatshirt or hoodie.

Please ensure that all clothing is clearly labelled with a sewn-in label or a Sharpie (Biro washes out) as we already have a mountain of unclaimed clothing, most of it unnamed.

Please do let us know if you need support with providing the listed school uniform. We have a supply of excellent quality, unclaimed uniform items that we are happy to provide.

Please contact the school office team who will be happy to help: office@towcester.pdet.org.uk

Pre-loved School Uniform

Have you visited our pre-loved school uniform stand in our reception area? You are welcome to come in and have a browse. Items are being sold for FOTOPs funds with a minimum donation of £1 per item.

We currently have a couple of summer dresses, t-shirts, shorts and trousers and a few small sized jumpers/cardigans. If anyone has any good quality pre-loved uniform they would like to donate, especially in larger sizes, please drop these in at reception, thank you.

Nut Free School

We are a nut-free school.

Please could we ask that our community are mindful of those children who have allergic reactions, some severe, to nuts. **We ask that when selecting items for your child's lunchbox or mid-morning snack that you choose nut-free options. Please avoid using sandwich fillers such as peanut butter or Nutella as these pose a direct risk to pupils with allergies.** Your consideration and support enables us to keep all of our children safe in school. Thank you for your support.

Food tasting in school

This academic year, we will send out to all parents a communication requesting permission for children to taste foods at school. This consent form will ask you to detail any food allergies that your child has. If your child has an allergy, we will contact you to ensure that the information held on our system about their allergy and any preventative measures linked to this is up to date.

If your child has developed an allergy, please ensure that you communicate this to the school office.

When food tasting activities are taking place, teachers will contact the parents of children with allergies directly to ask them to come into school to check the ingredients of the foods in person and sign a consent form for the foods to be tasted.

Phonics Open Morning

Ever wondered how you can support your child with their Phonics?

Ever wondered how your child is taught Phonics at school?

Come along to our **Phonics Open morning on Wednesday 27th September** to see the answers in action!

Starting at **9am in the KS2 Hall**, join us to learn more about our Phonics programme, how you can support your child with Phonics and an opportunity to join your child in their phonics lessons. We look forward to seeing you there!

Class Dojo

All children are individually recognised for showing our school values, good learning behaviours, outstanding work and are awarded a Dojo point. Children are awarded certificates when they have collected dojos at certain milestones as well as earning a Ruby, Emerald or Sapphire pin badge. This year we are also using the parent feature of ClassDojo.

Once parents have signed up, they will receive an alert every time their child is awarded a Dojo point. It will also be used to communicate between home and class teacher: instantly sharing messages, updates, events, and photos from class. It's simple, secure, and gives you a window into their school day!

An email will be sent out shortly with information on how families can sign up for a parent account on ClassDojo!

School Term Dates and Holidays

This academic year we will be monitoring attendance, punctuality and absence closely.

We believe that 'every lesson counts' and encourage regular attendance at school. We have high expectations of our children just as you have high expectations of us; these expectations cannot be met if your child is frequently absent or late.

We ask that you avoid booking holidays during term-time. Our term dates are published on the website a year in advance giving ample notice of holiday periods.

Any holiday in term time will be treated as unauthorised absence and will be taken into account when referring parents and families to the Education Welfare Services. We will refer families to the Local Authority to consider administering Penalty Notices for non-school attendance when holidays are taken during term-time.

If your child's attendance drops below 95%, we will notify you and work with you to ensure that their attendance rate increases. Our target for every child is an attendance rate of above 96%.

If your child's attendance drops below 90%, they will be classified as a 'persistent absentee'. We will work with you to set targets to improve their attendance, but if attendance rates don't increase within the timescales that are set, we have a duty to report the absence to the County Attendance Team. A Penalty Notice Warning may be issued which could result in a fine or further legal action through the courts.

Our school gates will close promptly at 8.50am as this is when our school bell goes to mark the start of the school day. Please allow ample time to arrive, park (if driving) and drop your children safely at school. Children arriving after 8.50am will need to enter school via the main school office. If your child is regularly late, we will contact you to offer support as important learning takes place from the very start of the school day.

Good attendance at school gives your child the very best opportunity to flourish, please support them in this by ensuring that they are in school every day that they are well enough to be.

If you need any support with your child's attendance, please do contact us through the school office. We will be more than happy to help.

ABM School Meal Costs Reminder

A gentle reminder that the cost of school meals for those parents that pay for school meals will be £2.60 per meal this year. We are fortunate that our school will continue to work with ABM to offer freshly cooked food on site whenever it is possible.

Tesco Tokens

You may have noticed that there is a blue token collection at Towcester Tesco for Towcester CE Primary School's Hive.

The Hive is our wellbeing and mental health hub where many of the wellbeing and social, emotional mental health interventions take place; it also serves as a space for our Breakfast and Lunch club.

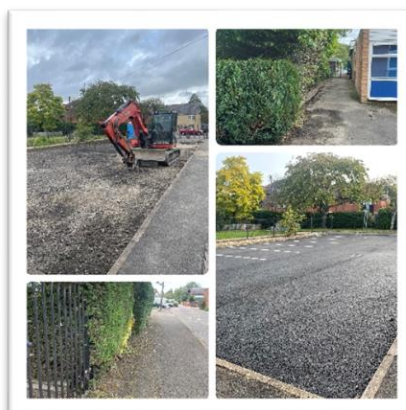
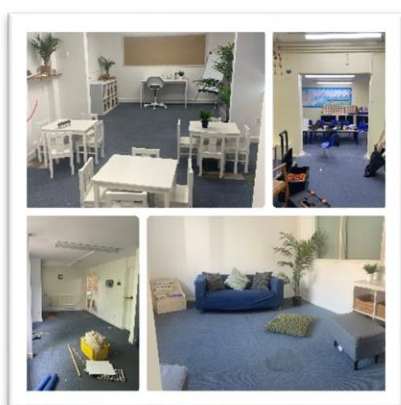
Please support the school and add your tokens to our collection. We thank you for your support and look forward to purchasing new furniture so the space can become even more nurturing and homely. The collection point will be open until the end of September – thank you for supporting us.

School Website

Have you visited our new website? [Towcester CE Primary School - Home \(towcesterprimary.northants.sch.uk\)](http://towcesterprimary.northants.sch.uk) We have added the school term dates for the next two coming academic years. There is a school calendar on the website which we will keep updating with school events.

Works in the school during the Summer Holiday

It's been very busy at school this summer holiday with many contractors working within school and in the grounds as well as many staff who have come in. Our grounds have had a much needed tidy up with hedges trimmed, weeds treated and a new carpark surface laid. We now have two new learning spaces that are inviting and nurturing in our Key Stage 1 building for children to use in groups and 1:1. We have also had a whole new fire system installed throughout school to make our building as safe as it can be. We are proud of the changes and hope the children and parents feel the same sense of pride.



Family Support Worker Section

Hello,

Welcome back to the new school year and to the new children joining us this year. I hope getting back into the school routine hasn't been too stressful after the summer holiday.



For those of you that don't know me, I am Mrs McShane, and I am the family support worker. This is a new role for me within the school, one which I am looking forward to getting stuck into.

Please do come and say hello when you see me on the playground, before and after school. If you have any suggestions for parent training or ideas about what would benefit our families that the school can help with, do come and have a chat with me, or if you would prefer you can call or email me.

I will be holding a coffee morning on The Bandstand on Wednesday 13th September, bring your own 'To Go' cup if you'd like. Feel free to come and have a chat, or just grab a coffee (or tea, and maybe a biscuit) and go. I look forward to seeing you.

I wanted to add a link about internet safety for you to have a look at. Childnet have lots of information and resources to help navigate the online world.

<https://www.childnet.com/resources/parents-and-carers>

I also wanted to attach a recipe, "That's odd!" I hear you say.....hear me out please! With the cost of living being what it is, I know it can be hard to make a meal out of what we have in the cupboards. This is something Jack Monroe, who is an author of many cookbooks, understands. She found herself having to use the Food Bank for about 6 months, during that time she started a blog and would post recipes on there of things she made using the food from the Food Bank. This recipe is one of Jack Monroes; let me know if you do try it.

Thank you for reading our newsletter, if you have any questions or queries about any of the items, please do not hesitate to contact me via the school office.

We look forward to another wonderful year in the life of Towcester Primary School and hope that you will join us in our events and celebrations!

With kind regards

Sally Beaton

Headteacher

Dates for this term

Date	Event
Wed 6 th Sept	First Day Back
Fri 8 th Sept	Swimming Catch up for Y6 every Friday during Autumn 1 Term
Wed 13 th Sept	Coffee Morning 'coffee to go' – in the Bandstand for all parents
Thu 14 th Sept	Photos – individuals
Fri 15 th Sept	Photos – individuals
Mon 18 th Sept	Meet The Teacher Sessions for UKS2 3:00 – 3:30
Tue 19 th Sept	Training for the children who will be our Mental Health Champions
Wed 20 th Sept	Meet The Teacher Sessions for LKS2 3:00-3:30
Thu 21 st Sept	Meet The Teacher Sessions for KS1 + EYFS 3:00 – 3:30
Wed 27 th	Phonics Open Morning for parents
Friday 29 th	McMillan 'Coffee Morning' - After School for everyone
Mon 2 nd Oct	Harvest Festival Service in Church 9:30am
Fri 6 th Oct	Harvest Supper after school for everyone
Wed 11 th Oct	Y4 Trip Ashmoleon
Tues 17 th Oct	Open Morning for September 2024 Intake 9:15am – 11:15am
Wed 18 th Oct	Open Morning for September 2024 Intake 9:15am – 11:15am
	WB Mon 23 rd Oct Half Term
Mon 30 th	Road Safety Week
Wed 8 th Nov	Year 6 Oxford Castle and Prison Trip
Mon 13 th Nov	Anti Bullying Week – Odd Socks Day
Tues 21 st Nov	Parents Evening 4-7pm
Thu 23 rd Nov	Parents Evening 4-7pm
Fri 1 st Dec	9:15am Y3 Christingle Service in school to parents
Tues 12 th Dec	KS1 2pm Dress Rehearsal – to whole school/pre-school/care-home
Wed 13 th Dec	KS1 2pm Nativity to parents
Thu 14 th Dec	KS1 2pm Nativity to parents
Mon 18 th Dec	School Christmas Church Service
Tues 17 th Dec	Y5 and 6 Carols and Readings – in school for parents
Wed 20 th Dec	1.30 Carols around the tree – whole school and community

Term Dates

Academic year 2023/24

Term 1	Training day	Monday 4 th September 2023
	Training day	Tuesday 5 th September 2023
	School opens to pupils	Wednesday 6 th September 2023
	School closes	Friday 20 th October 2023
Term 2	School re-opens	Monday 30 th October 2023
	School closes	Wednesday 20 th December 2023
Term 3	Training day	Thursday 4 th January 2024
	Training day	Friday 5 th January 2024
	School re-opens	Monday 8 th January 2024
	School closes	Friday 16 th February 2024
Term 4	Training day	Monday 26 th February 2024
	School re-opens	Tuesday 27 th February 2024
	School closes	Thursday 28 th March 2024
Term 5	School re-opens	Monday 15 th April 2024
	School closed – Bank Holiday	Monday 6 th May 2024
	School closes	Friday 24 th May 2024
Term 6	School re-opens	Monday 3 rd June 2024
	School closes	Tuesday 23 rd July 2024