



Supporting Pupils with Medical Conditions Policy

This is a Trust Policy and the name of the academy and the relevant individuals within the academy with specific responsibilities, referred to in the policy, can be found in the *Appendix*.

Date	Revision & Amendment Details	By Whom
November 2021	Approved	Education Committee
November 2022	No changes	Education Committee
December 2023	No changes required – confirmed by Natalie Packer	Education Committee

CONTENTS

1	Aims	3
2	Legislation and Statutory Responsibilities	3
3	Roles and Responsibilities	4
3.1	The Trust	4
3.2	The Headteacher	4
3.3	Staff	4
3.4	Parents / Carers	5
3.5	Pupils	5
3.6	School Nurses and Other Healthcare Professionals	5
4	Day Trips, Residential Visit and Sporting Activities	5
5	Being Notified that a Child has a Medical Condition	5
6	Individual Healthcare Plans (IHPs)	5
6.1	Process for Developing Individual Healthcare Plans (IHPs)	5
7	Managing Medicines	7
7.1	Controlled Drugs	8
7.2	Pupils Managing their Own Needs	8
7.3	Unacceptable Practice	9
8	Emergency Procedures	9
9	Training	9
10	Liability and Indemnity	10
11	Complaints	10
12	Monitoring Arrangements of the Policy	10
	Appendix 1	11

1. Aims

Peterborough Diocese Education Trust (the Trust) is committed to providing all pupils with a high quality education whatever their individual needs. In line with statutory requirements, we have a responsibility to ensure that all pupils with medical conditions are properly supported in our academies so that they can play a full and active role in academy life, remain healthy and achieve their academic potential. This policy aims to ensure that:

- Pupils, staff and parents / carers understand how the academy will support pupils with medical conditions
- Pupils with medical conditions are properly supported to allow them to access the same education as other pupils, including school trips and sporting activities
- It is recognised that every pupil with a medical condition is different and should be treated as an individual.

This policy is based on the principle that all pupils are entitled to a high quality education, within an academy wherever possible, and that disruption to the education of those with health needs should be minimised. Effective partnership working between parents / carers, academies, education services, health services and other agencies involved with a pupil are essential to the effective implementation of this policy in practice.

The Headteacher will implement this policy by:

- Ensuring staff are suitably trained
- Ensuring staff are aware of a pupil's condition, where appropriate
- Making sure there are cover arrangements so someone is always available to support pupils with medical conditions
- Ensuring individual healthcare plans (IHPs) are developed and monitored, where appropriate.

The designated lead (the Designated Lead) at an individual academy is named in the appendix and has responsibility for implementing this policy.

2. Legislation and Statutory Responsibilities

This policy meets the requirements under Section 100 of the *Children and Families Act 2014*, which places a duty on the Trust to make arrangements for supporting pupils at our academies with medical conditions. It follows the Department for Education's statutory guidance: *Supporting pupils at school with medical conditions*.

Pupils' medical needs may be broadly summarised as being of two types:

- **Short-term** - affecting their participation at the academy because they are on a course of medication
- **Long-term** - potentially limiting access to education and requiring on-going support, medicines or care while at the academy to help them to manage their condition and keep them well, including monitoring and intervention in emergency circumstances.

It is important that parents / carers feel confident that the academy will provide effective support for their child's medical condition and that the child feels safe.

Some pupils with medical conditions may have a disability. Where this is the case, the requirements of the *Equality Act 2010* will apply. Where pupils have an identified special educational need, the *SEND Code of Practice, 0 to 25 years (2014)* will also apply.

This policy also links to the following policies and documentation:

- Accessibility plan
- Complaints
- Equality information and objectives
- Health and safety (which includes First aid)
- Safeguarding / Child Protection
- Special educational needs information report and policy.

In circumstances where a pupil's medical condition becomes too complex or the risks are too great to manage in the academy, the academy should seek advice, as appropriate, from Peterborough City Council, Rutland County Council or in accordance with Northamptonshire Council's (North and West) *Ensuring a good education for children who cannot attend school because of health needs* policy document and consult with Hospital and Outreach Education (HOE).

3. Roles and Responsibilities

3.1 The Trust

The Trust has ultimate responsibility to make arrangements to support pupils with medical conditions.

3.2 The Headteacher

The Headteacher will:

- Ensure that sufficient staff have received suitable training and are competent before they are responsible for supporting pupils with medical conditions
- Make sure all staff are aware of this policy and understand their role in its implementation
- Ensure that there is a sufficient number of trained staff available to implement this policy and deliver against all individual healthcare plans (IHPs), including in contingency and emergency situations
- Take overall responsibility for the development of IHPs
- Make sure that academy staff are appropriately insured and aware that they are insured to support pupils in this way
- Contact the school nursing service in the case of any pupil who has a medical condition that may require support at the academy, but who has not yet been brought to the attention of the school nurse
- Ensure that systems are in place for obtaining information about a pupil's medical needs and that this information is kept up to date.

3.3 Staff

Supporting pupils with medical conditions during academy hours is not the sole responsibility of one person. Any member of staff may be asked to provide support to pupils with medical conditions, although they will not be required to do so. This includes the administration of medicines.

Those staff who take on the responsibility to support pupils with medical conditions will receive sufficient and suitable training, and will achieve the necessary level of competency before doing so.

Teachers take into account the needs of pupils with medical conditions that they teach. All staff will know what to do and respond accordingly when they become aware that a pupil with a medical condition needs help.

3.4 Parents / Carers

Parents / carers will:

- Provide the academy with sufficient and up-to-date information about their child's medical needs
- Be involved in the development and review of their child's IHP, if their child requires one
- Carry out any action they have agreed to as part of the implementation of the IHP e.g. provide medicines and equipment.

3.5 Pupils

Pupils with medical conditions will often be best placed to provide information about how their condition affects them. Pupils should be fully involved in discussions about their medical support needs and contribute as much as possible to the development of their IHPs, taking into consideration their age and capacity. They are also expected to comply with their IHPs.

3.6 School Nurses and Other Healthcare Professionals

Healthcare professionals, such as GPs and paediatricians, will liaise with the school nurses and notify them of any pupils identified as having a medical condition.

4. Day Trips, Residential Visits and Sporting Activities

Our academies will actively support pupils with medical condition to participate in day trips, residential visits and sporting activities by being flexible and making reasonable adjustments. The academy will consider what reasonable adjustments need to be made to enable these pupils to participate fully and safely on academy trips, visits and sporting activities.

Risk assessments will be carried out so that planning arrangements take account of any steps needed to ensure that pupils with medical conditions are included. In doing so, pupils, their parents / carers and any relevant healthcare professionals will be consulted.

5. Being Notified that a Child has a Medical Condition

Information about medical needs is requested on admission to the academy. Parents / carers are asked to keep the academy informed of any changes to their child's condition or treatment. When information is passed on to the academy, office staff have a responsibility to pass this information on to the Designated Lead and the child's class teacher, where appropriate. Whenever possible, meetings with parents / carers and other professionals are held before the pupil starts at the academy to ensure a smooth transition.

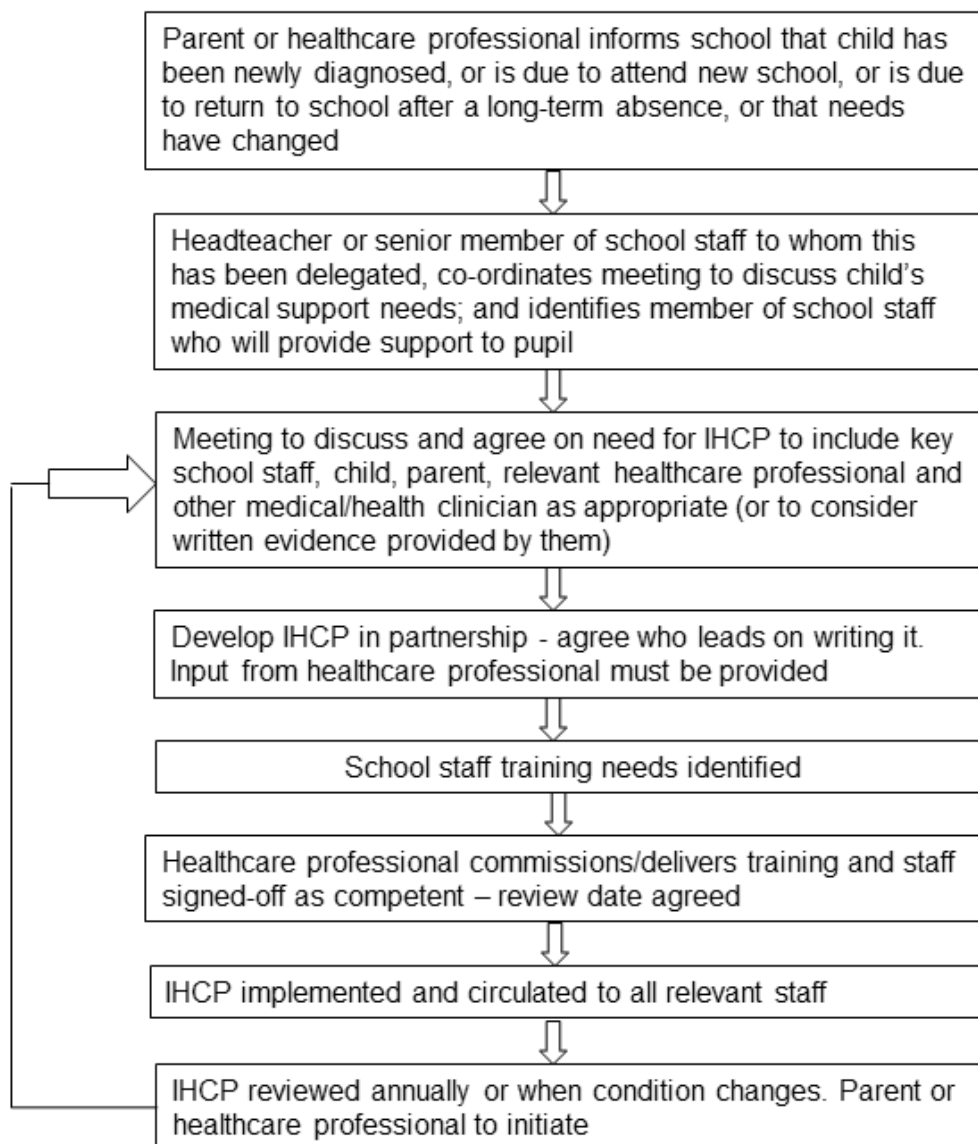
6. Individual Healthcare Plans (IHPs)

When the academy is notified that a pupil has a medical condition, the process outlined below will be followed to decide whether the pupil requires an IHP. This process follows the guidance within the DfE *Supporting pupils with medical conditions* document. Not all pupils with a medical condition will require an IHP, however, they will often be essential, such as in cases where conditions fluctuate or where there is a high risk that emergency intervention will be needed. Plans are also likely to be needed in cases where medical conditions are long-term and complex.

IHPs provide clarity about what needs to be done, when and by whom. The Headteacher has overall responsibility for the development of IHPs for pupils with medical conditions. This has been delegated to the Designated Lead. Plans will be drawn up in partnership with the academy, parents / carers and any relevant healthcare professional, such as the school nurse, specialist or paediatrician, who can best advise on the pupil’s specific needs. The pupil will be involved wherever appropriate. The academy will make every effort to ensure that arrangements are put into place within two weeks, or by the beginning of the relevant term for pupils who are new to the academy.

6.1 Process for Developing Individual Healthcare Plans (IHPs)

Supporting pupils with medical conditions, DfE



Plans will be reviewed at least annually, or earlier if there is evidence that the pupil’s needs have changed.

IHPs will be linked to, or become part of, any education, health and care (EHC) plan. If a pupil has SEN but does not have an EHC plan, the SEN will be mentioned in the IHP.

The level of detail in the plan will depend on the complexity of the pupil's condition and how much support is needed. The Headteacher and Designated Lead will consider the following when deciding what information to record on IHPs:

- The medical condition, its triggers, signs, symptoms and treatments
- The pupil's resulting needs, including medication (dose, side effects and storage) and other treatments, time, facilities, equipment, testing, access to food and drink where this is used to manage their condition, dietary requirements and environmental issues, e.g. crowded corridors, travel time between lessons
- Specific support for the pupil's educational, social and emotional needs. For example, how absences will be managed, requirements for extra time to complete tests, use of rest periods or additional support in catching up with lessons, counselling sessions
- The level of support needed, including in emergencies. If a pupil is self-managing their medication, this will be clearly stated with appropriate arrangements for monitoring
- Who will provide this support, their training needs, expectations of their role and confirmation of proficiency to provide support for the pupil's medical condition from a healthcare professional, and cover arrangements for when they are unavailable
- Who in the academy needs to be aware of the pupil's condition and the support required
- Arrangements for written permission from parents / carers and the Headteacher for medication to be administered by a member of staff, or self-administered by the pupil during academy hours
- Separate arrangements or procedures required for academy trips or other academy activities outside of the normal academy timetable that will ensure the pupil can participate, e.g. risk assessments
- Where confidentiality issues are raised by the parent / carer or pupil, the designated individuals to be entrusted with information about the pupil's condition
- What to do in an emergency, including who to contact, and contingency arrangements.

7. Managing Medicines

Due to the diverse nature of our academies in terms of numbers of pupils, resources and facilities, it is within the individual Headteacher's discretion, which should be exercised reasonably, as to whether at their individual academy they:

- Administer non-prescribed medication to pupils on the request of their parents / carers
- Administer non-prescribed medication at the discretion of the Headteacher to individual pupils
- Do not administer non-prescribed medication.

Prescription (and non-prescription medicines, if applicable), will only be administered at the academy:

- When, in the Headteacher's discretion, it would be detrimental to the pupil's health or academy attendance not to do so **and**
- Where the Headteacher has parents' / carers' written consent.

Pupils under 16 will not be given medicine containing aspirin unless prescribed by a doctor.

Anyone giving a pupil any medication (for example, for pain relief) will first check maximum dosages and when the previous dosage was taken (this information must be provided by parents / carers). Parents / carers will always be informed if such medication has been given.

The academy will only accept prescribed medicines that are:

- In-date
- Labelled with the child's name
- Provided in the original container, as dispensed by the pharmacist, and include instructions for administration, dosage and storage.

If applicable, the academy will only accept non-prescribed medicines that are:

- In-date
- Labelled with the child's name
- Provided in the original container and include instructions for administration, dosage and storage.

The academy will accept insulin that is inside an insulin pen or pump rather than its original container, but it must be in date.

All medicines will be stored safely. Pupils will be informed about where their medicines are at all times and be able to access them immediately. Medicines and devices such as asthma inhalers, blood glucose testing meters and adrenaline pens will always be readily available and not locked away.

The Headteacher will ensure that written records are kept of all medicine administered to pupils. IHPs are kept in a readily accessible place which all staff are aware of.

Medicines will be returned to parents/carers to arrange for safe disposal when no longer required.

7.1 Controlled Drugs

Controlled drugs are prescription medicines that are controlled under the Misuse of Drugs Regulations 2001 and subsequent amendments, such as morphine or methadone.

A pupil who has been prescribed a controlled drug may have it in their possession if they are competent to do so, but they must not pass it to another pupil to use. All other controlled drugs are kept in a secure cupboard in the academy office and only named staff have access.

Controlled drugs will be easily accessible in an emergency and a record of any doses used and the amount held will be kept.

7.2 Pupils Managing their Own Needs

Pupils who are competent will be encouraged to take responsibility for managing their own medicines and procedures. This will be discussed and agreed with parents / carers and it will be reflected in their IHPs.

Pupils will be allowed to carry their own medicines and relevant devices wherever possible. Staff will not force a pupil to take a medicine or carry out a necessary procedure if they refuse, but will follow the procedure agreed in the IHP and inform parents / carers so that an alternative option can be considered, if necessary.

7.3 Unacceptable Practice

Academy staff should use their discretion and judge each case individually with reference to the pupil's IHP, but it is generally not acceptable to:

- Prevent pupils from easily accessing their inhalers and medication, and administering their medication when and where necessary
- Assume that every pupil with the same condition requires the same treatment
- Ignore the views of the pupil or their parents / carers
- Ignore medical evidence or opinion (although this may be challenged)
- Send pupils with medical conditions home frequently for reasons associated with their medical condition or prevent them from staying for normal academy activities, including lunch, unless this is specified in their IHPs
- If the pupil becomes ill, send them to the academy office or medical room unaccompanied or with someone unsuitable
- Prevent pupils from drinking, eating or taking toilet or other breaks whenever they need to in order to manage their medical condition effectively
- Administer, or ask pupils to administer, medicine in academy toilets
- Require parents / carers, or otherwise make them feel obliged, to attend the academy to administer medication or provide medical support to their child, including with toileting issues
- No parent / carer should have to give up working because the academy is failing to support their child's medical needs
- Prevent pupils from participating, or create unnecessary barriers to pupils participating in any aspect of academy life, including academy trips, e.g. by requiring parents / carers to accompany their child
- Penalise pupils for their attendance record if their absences are related to their medical condition, e.g. hospital appointments.

8. Emergency Procedures

Staff will follow the academy's normal emergency procedures (for example, calling 999). All pupils' IHPs will clearly set out what constitutes an emergency and will explain what to do.

If a pupil needs to be taken to hospital, staff will stay with the pupil until the parent / carer arrives, or accompany the pupil to hospital by ambulance.

9. Training

Staff who are responsible for supporting pupils with medical needs will receive suitable and sufficient training to do so. The training will be identified during the development or review of IHPs. Staff who provide support to pupils with medical conditions will be included in meetings where this is discussed. The relevant healthcare professionals will lead on identifying the type and level of training required. Training will be kept up to date. Training will:

- Be sufficient to ensure that staff are competent and have confidence in their ability to support the pupils
- Fulfil the requirements in the IHPs
- Help staff to have an understanding of the specific medical conditions they are being asked to deal with, their implications and preventative measures.

Healthcare professionals will provide confirmation of the proficiency of staff in a medical procedure, or in providing medication.

All staff will receive training so that they are aware of this policy and understand their role in implementing it, for example, with preventative and emergency measures so they can recognise and act quickly when a problem occurs. This will be provided for new staff during their induction.

10. Liability and Indemnity

The Trust has insurance in place with the RPA Scheme which covers staff providing support to pupils with medical conditions; staff should contact the Trust Central Team if they require details of such insurance. In some cases, however, individual cover may need to be arranged for healthcare procedures.

11. Complaints

Should parents / carers be unhappy with any aspect of their child's care, they must discuss their concerns with the academy. This will be with the child's class teacher in the first instance, with whom any issues should be addressed. If this does not resolve the problem or allay the concern, the problem should be brought to the Designated Lead, who will, where necessary, bring concerns to the attention of the Headteacher. In the unlikely event of this not resolving the issue, the parent / carer must make a formal complaint using the academy Complaints Procedure.

12. Monitoring Arrangements of the Policy

This document will be reviewed every three years, but may be reviewed and updated more frequently if necessary.

Appendix 1

Name of academy: Towcester C of E Primary School

Headteacher: Mrs Sally Beaton

Designated Lead with responsibility for policy implementation: Mrs Clare Booth